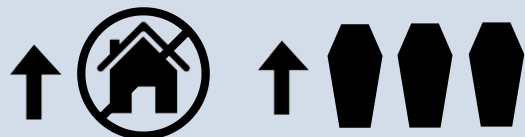


# The Effect of Evictions on Accidental Drug and Alcohol Mortality from 2004-2016



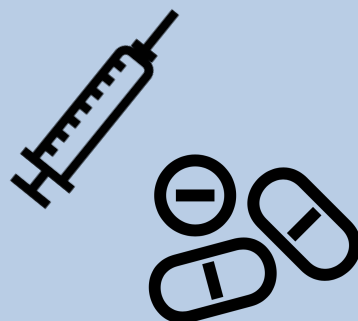
National sample (2004-2016): Princeton University Eviction Lab + Multiple Cause-of-Death Mortality files



High eviction rates are associated with higher levels of substance-related mortality



This relationship is driven primarily by urban counties



Eviction may exacerbate deaths linked to substance use



New Housing and Urban Development polices may increase eviction rates and worsen substance-related mortality